

# IMPACT REPORT

# FY24



**Schreiber**  
CENTER FOR PEDIATRIC DEVELOPMENT

# Letter from the President



**JAMES W. DEBORD**

We are delighted to present the Schreiber Center for Pediatric Development's FY24 Impact Report. This year was filled with transformational progress. We expanded our footprint, renovated treatment space, and continued to provide exceptional therapy services for children across our region whose families entrust us to help bring their hopes and dreams to life.

**\$2,342,100**

Total Cost of  
Uncompensated Care

**31,650**

Hours of Therapy Provided

**1,957**

Unique Clients Served



# Center Overview

## Vision

We envision a community where every child has the opportunity to reach their fullest potential, supported by our compassionate and dedicated team that believes in every child's inherent worth and limitless possibilities.

## Mission

Our mission is to enrich the lives of children with disabilities, developmental delays, and acquired injuries through family-centered education and therapy.

# Therapy Highlights

At the Schreiber Center, we offer a comprehensive range of therapy services tailored to meet the unique needs of each child. Our approach is holistic, integrating physical, occupational, and speech-language therapy to support the developmental growth of every child we serve.

In FY24, our therapists provided:

- 11,850 hours of occupational therapy (OT)
- 9,784 hours of speech-language therapy (SLT)
- 9,056 hours of physical therapy (PT)
- 960 hours of behavioral health therapy (BH)



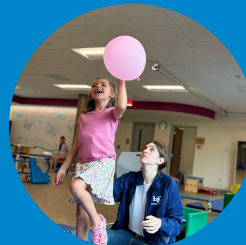
# OT Clients

**698**



# SLT Clients

**594**



# PT Clients

**568**



# BH Clients

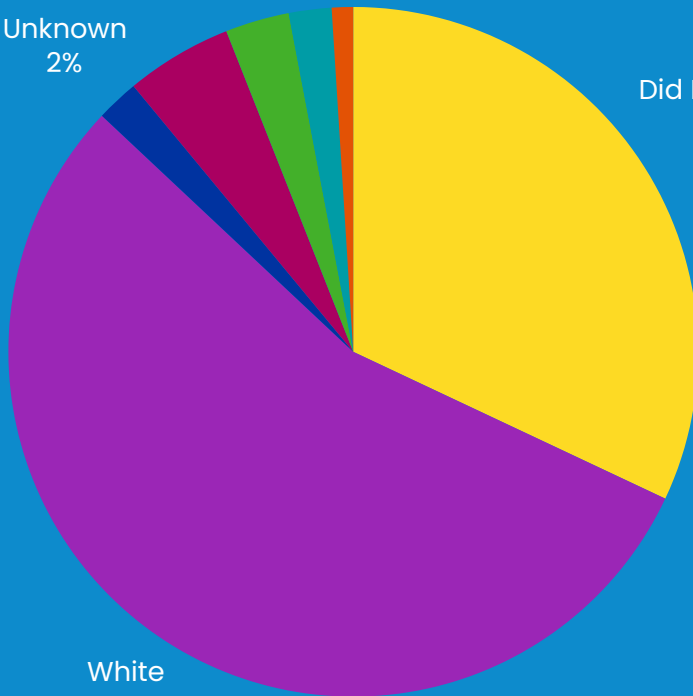
**97**

# Our Clients

Black or African American  
5%

Unknown  
2%

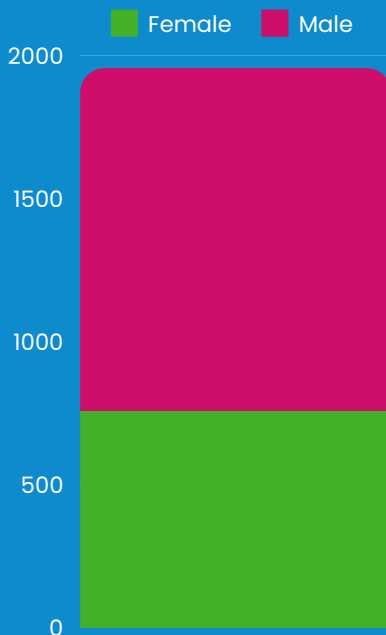
Did Not Answer  
32%



White  
55%

## Top 5 Diagnosis

1. Developmental delay
2. Autistic spectrum disorder
3. Speech delay
4. Sensory disorder
5. Gross motor challenges

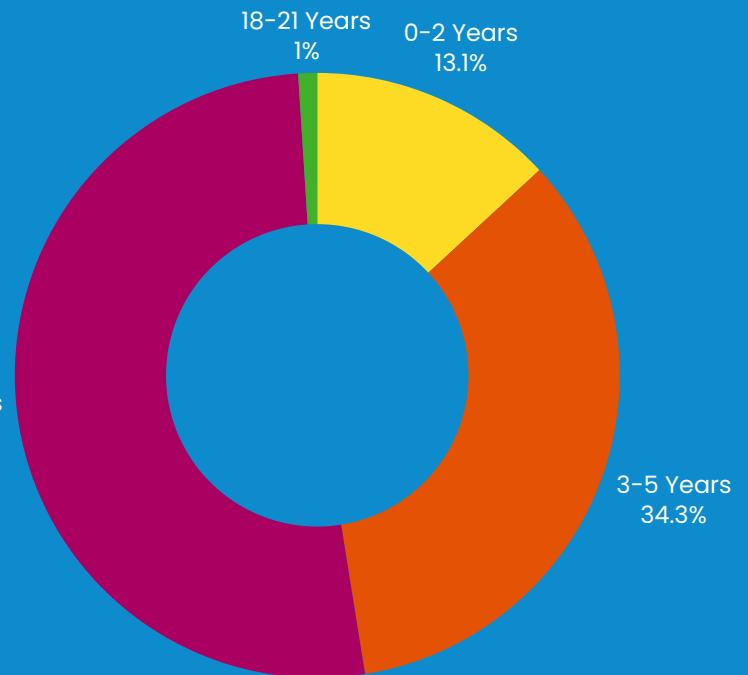


18-21 Years  
1%

0-2 Years  
13.1%

6-17 Years  
51.5%

3-5 Years  
34.3%



# Our Programs



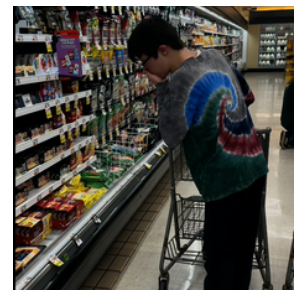
**S.T.A.R.S. Preschool** - Our preschool program brought together 13 children with developmental delays or disabilities with 32 typically developing peers to learn in an inclusive environment.

**Circle of Friends Academy** - With a Keystone STARS 4 designation, the Circle of Friends Academy provided early care and education to 18 infants (age 0-12 mos.), 16 toddlers (age 1-3 years), and 24 preschoolers (age 3-5 years).



**Family Support Programs** - We understand that raising a child with special needs can be both rewarding and challenging. We offered caretakers six evenings of respite, providing care to 143 children and more importantly providing parents and caregivers with a well-deserved break.

**Independent Activities of Daily Living** - Eleven teens completed a twelve-week cohort designed to teach activities of daily living aimed at boosting confidence, developing social skills and preparing for education and workforce transitions.



**Summer Camps** - We hosted four summer camps in 2024:

- Camp Schreiber: 52 campers
- Club 625 Camp: 33 campers
- LEGO Social Skills Camp: 25 campers
- Food Discovery Camp: 7 campers

# Where Heroes are Made



We surpassed our campaign goal and raised **\$13 million**



# Thank You Schreiber Heroes

Philanthropy enables healthcare organizations like the Schreiber Center to ensure that all children, regardless of their ability to pay, have access to necessary therapies. For nearly 90 years, our community has helped underwrite the cost of uncompensated care. Gifts from our 'Schreiber Heroes' play a vital role in promoting equity in healthcare and improving outcomes for vulnerable populations.



**1,452**

Unique Donors



**\$1.9M**

Total Giving

*\*Excluding capital campaign gifts*



# Schreiber

CENTER FOR PEDIATRIC DEVELOPMENT



[www.schreiberpediatric.org](http://www.schreiberpediatric.org)



625 Community Way, Lancaster, PA



717-393-0425

